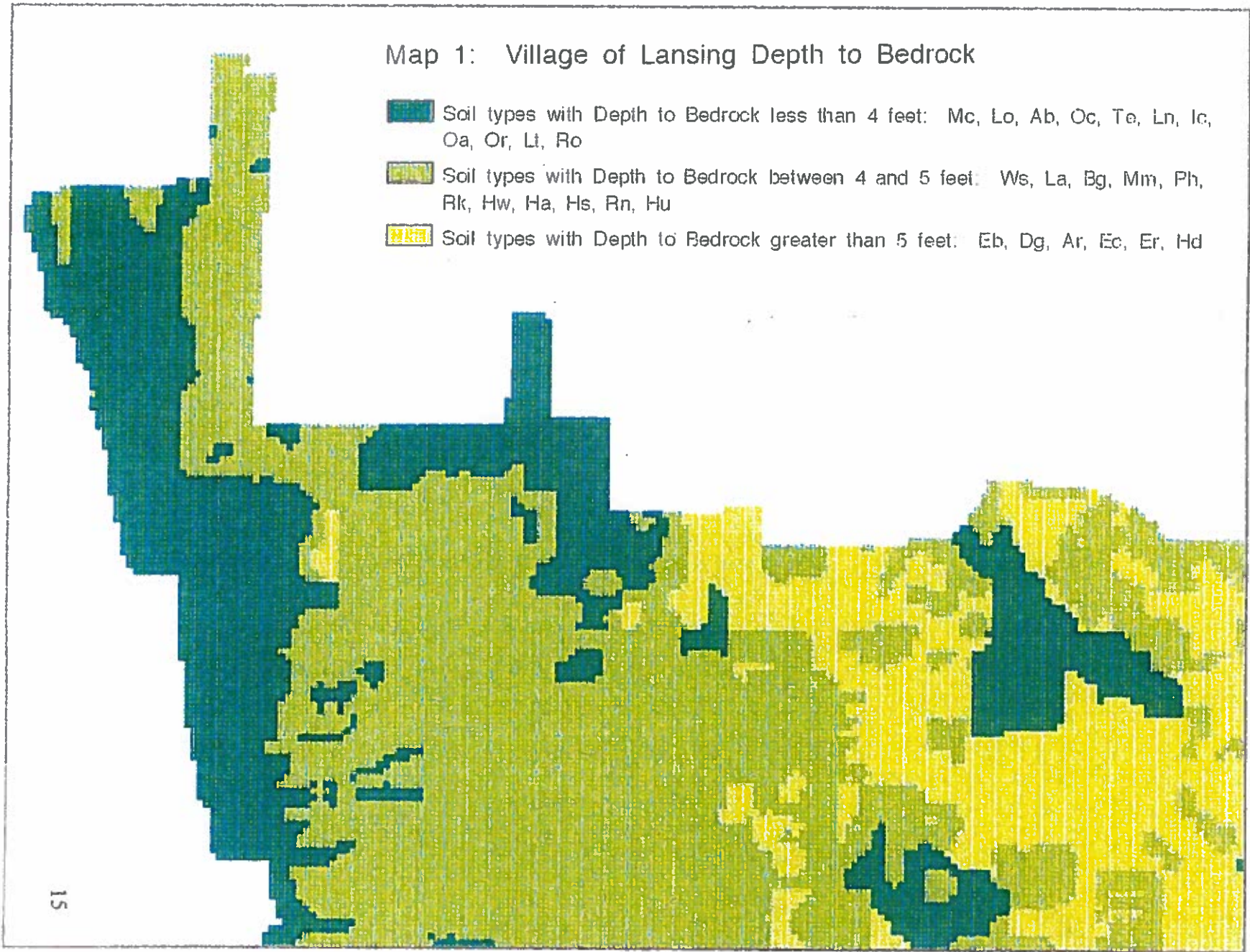


Map 1: Village of Lansing Depth to Bedrock

- Soil types with Depth to Bedrock less than 4 feet: Mc, Lo, Ab, Oc, Te, Ln, Ic, Oa, Or, Lt, Ro
- Soil types with Depth to Bedrock between 4 and 5 feet: Ws, La, Bg, Mm, Ph, Rk, Hw, Ha, Hs, Rn, Hu
- Soil types with Depth to Bedrock greater than 5 feet: Eb, Dg, Ar, Ec, Er, Hd






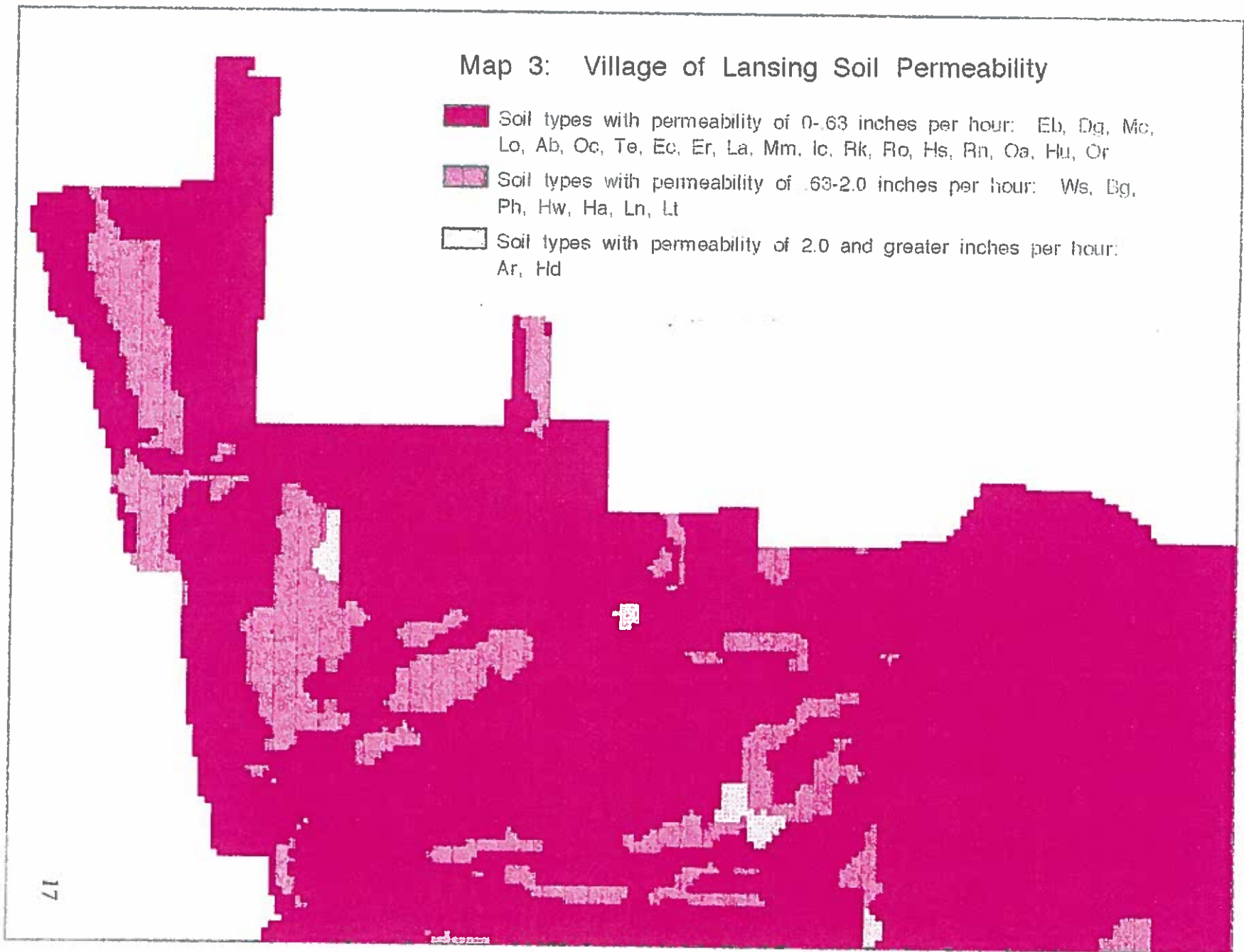
15

0 800 1600 Metres 1:47991



### Map 3: Village of Lansing Soil Permeability

-  Soil types with permeability of 0-.63 inches per hour: Eb, Dg, Mc, Lo, Ab, Oc, Te, Ec, Er, La, Mm, Ic, Rk, Ro, Hs, Rn, Oa, Hu, Or
-  Soil types with permeability of .63-2.0 inches per hour: Ws, Bg, Ph, Hw, Ha, Ln, Lt
-  Soil types with permeability of 2.0 and greater inches per hour: Ar, Hd



17

0 800 1600 Meires 1:47991



Marty has as word doc.



# Official Village of Lansing Zoning

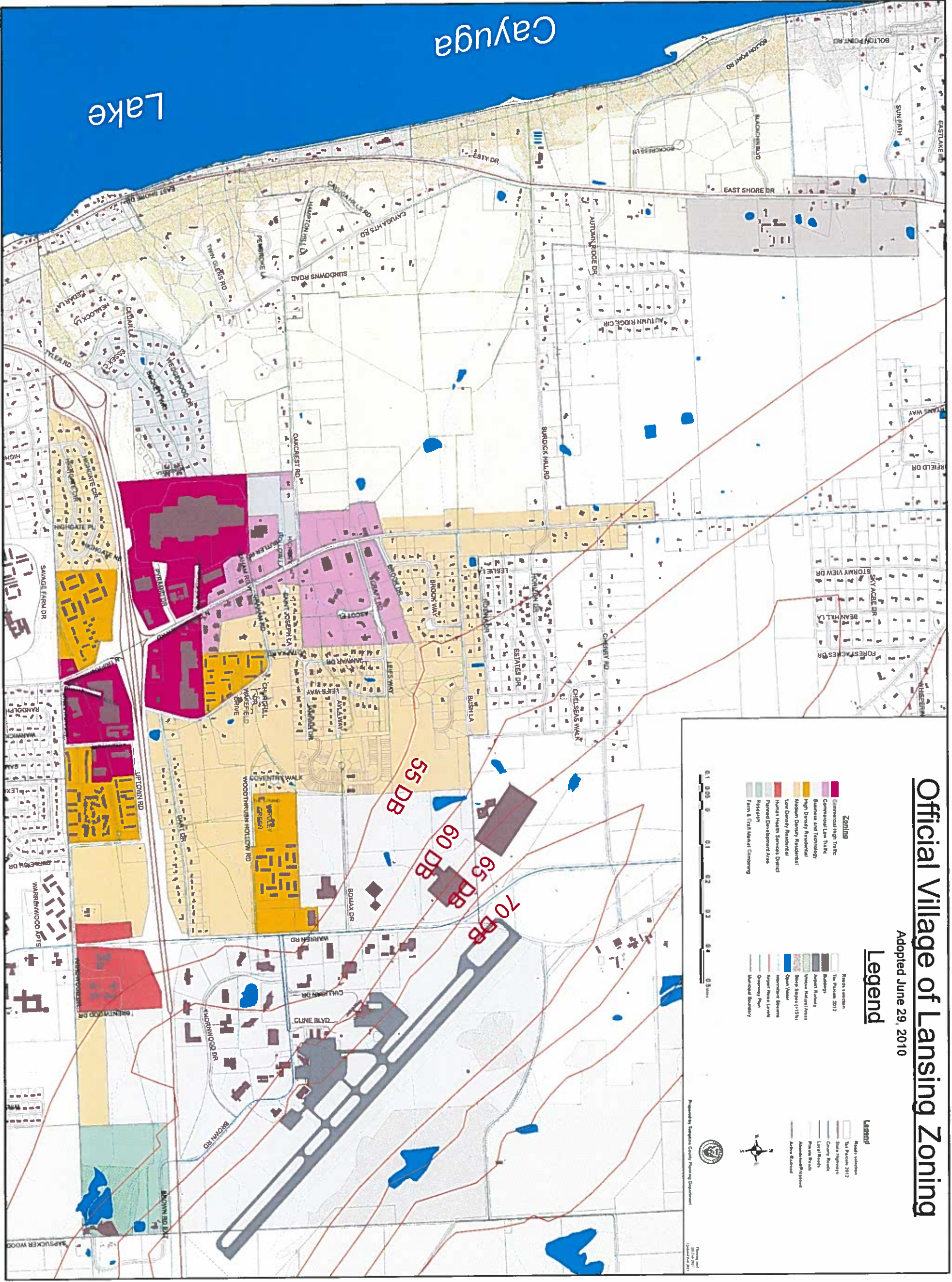
Adopted June 29, 2010

## Legend

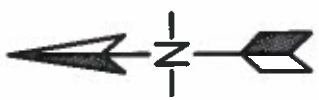
- |   |  |
|---|--|
|  Commercial High Traffic         |  Roads (existing)     |
|  Commercial Low Traffic          |  The Project 2012     |
|  Business and Technology         |  Buildings            |
|  High Density Residential        |  Airport Runway       |
|  Medium Density Residential      |  Unique Natural Areas |
|  Low Density Residential         |  Steep Slopes (>15%)  |
|  Human Impact Services District  |  Open Water           |
|  Planned Development Area        |  Nonwater Stream      |
|  Research                        |  Airport Noise Levels |
|  Farm & Cattle Market Clustering |  Cemetery Plot        |
|   |  Municipal Boundary   |
- 
- |  |  |
|--|--|
|  Roads (existing)   |  Roads (existing)   |
|  State Highways     |  State Highways     |
|  County Roads       |  County Roads       |
|  Local Roads        |  Local Roads        |
|  Private Roads      |  Private Roads      |
|  Abandoned/Proposed |  Abandoned/Proposed |
|  Active Railroad    |  Active Railroad    |



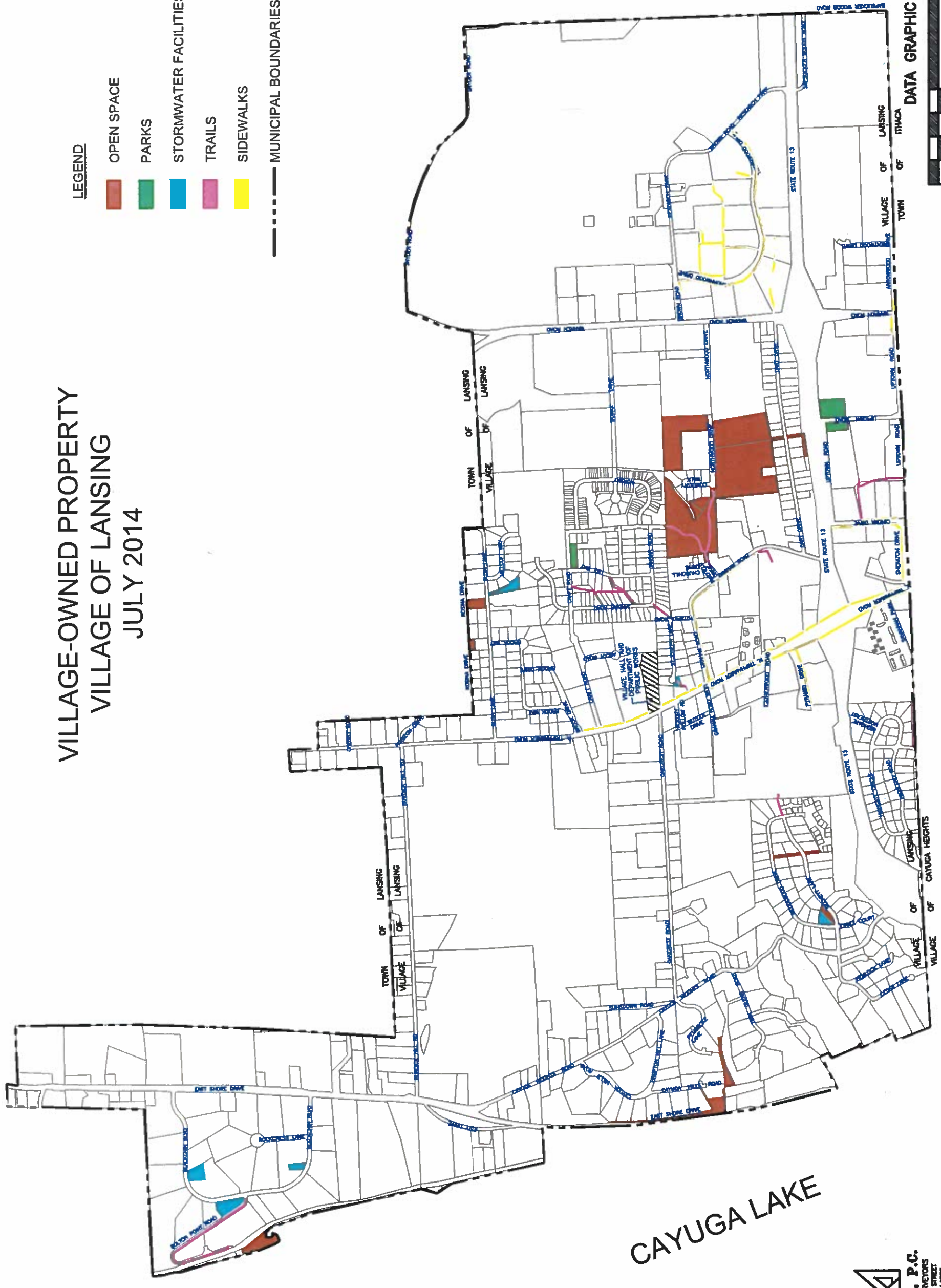
Prepared by: Tappan County Planning Department  
 Lansing, OH  
 12/20/2010



# VILLAGE-OWNED PROPERTY VILLAGE OF LANSING JULY 2014



- LEGEND**
- OPEN SPACE
  - PARKS
  - STORMWATER FACILITIES
  - TRAILS
  - SIDEWALKS
  - MUNICIPAL BOUNDARIES



CAYUGA LAKE

DATA GRAPHIC SCALE

